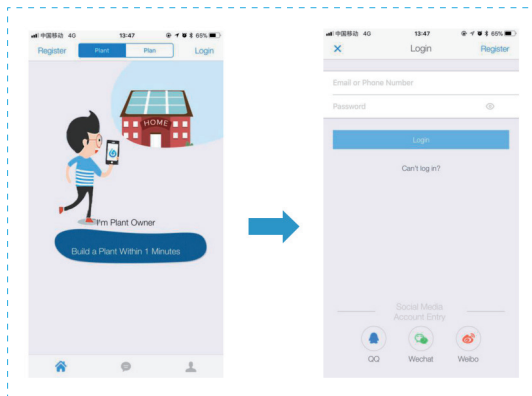


APP USER MANUAL



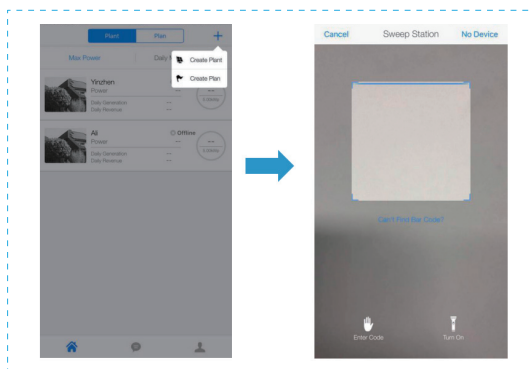
1.Registration

Click[Register] to create new account.You can use email to register.



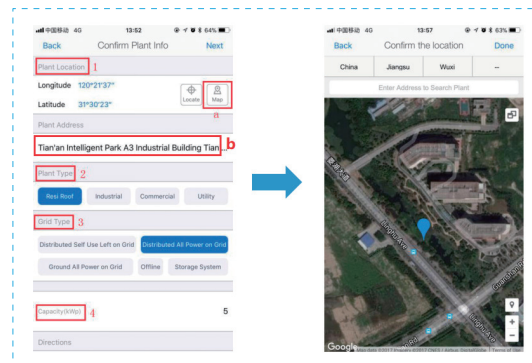
2.Create Plant

2.1 Click [+] and select [Create Plant]. Then scan the serial number of the stick logger,or manually enter the serial number.



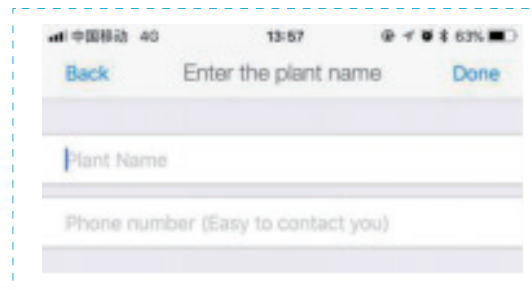
2.2 Edit plant information

- (1)Confirm your plant location (GPS function will automatically locate the plant site;if you want to modify the location.click the "map" icon in box a, and then manually enter the address in box b).
- (2)Select your plant type
- (3)Select your grid type
- (4)Fill in plant capacity
(It is not necessary to modify other information because APP has obtained local electricity price and FIT already.)

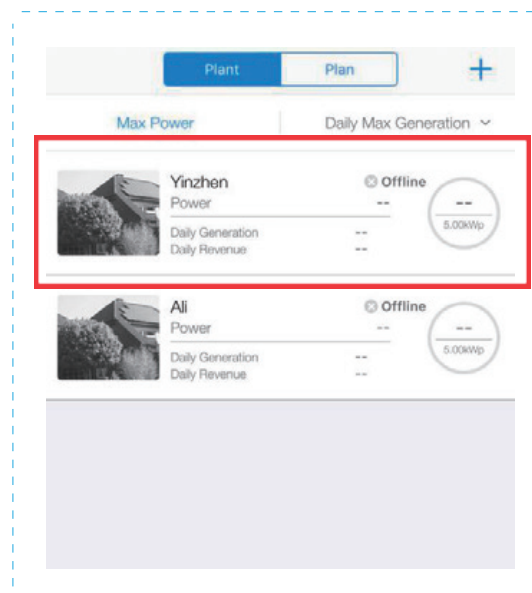


2.3 Input Plant Name

It is suggested to create a plant name like "location+name+capacity"(e.g.,Wuxi IGEN 8.1 KW),then click [Done].

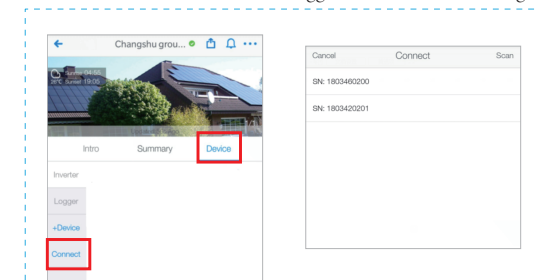


2.4 Now you can see your new plant on the homepage.



2.5WiFi Connection Configuration

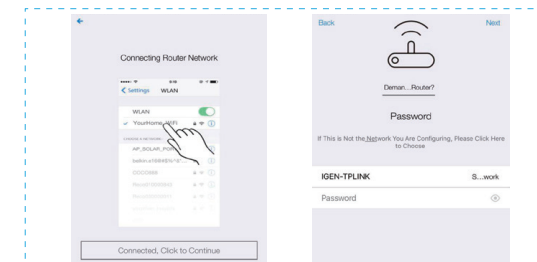
Select the plant which WiFi logger needs to be configured,"Device", then "Connect",choose the WiFi logger SN needs to be configured.



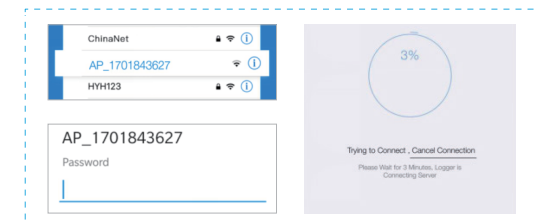
3.WiFi Connection Configuration

AP configuration

(1)Please make sure that your smartphone is connected to the WiFi network and enter the WiFi password.APP will automatically get the current smartphone WiFi account,type in the WiFi password to enter the configuration process.If thenetwork is not the one which logger needs to configure,switch the network. When switch the account,you could manually enter your network account.Notice:5G WiFi is not supported for now.



(2)Go to [Network Settings] interface, and select the stick logger's network AP_XXXXXXXX(S/N) and enter the password below the serial number. Then return to app , the stick logger will start to configure.



Notice

If it is unable to find an AP_XXXXXXXX(S/N) in wireless network list, please make sure the distance between WiFi router and stick logger is less than 10 meters. If there is any problem during the connection or setting process, you can repeat the above steps. If you still cannot find the AP_XXXXX, you can check the logger manual for troubleshooting or contact our Customer Service.

If the configuration fails, the reasons might be as follows:

- 1.Router password is wrong. Please click [Retry] and check the password.
- 2.The router's network signal is weak and the logger is too far away from the router. Please put the router closer to the logger.
- 3.Click too fast during the Logger's AP connection. Please wait a few seconds and then jump to the configuration after Logger's AP is connected.

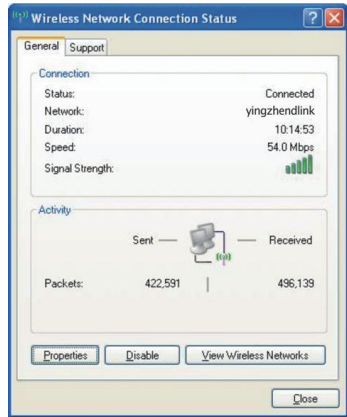
If you encounter any following situation, please reconfigure logger network:

- 1.Change router
- 2.Change WiFi password
- 3.Change router's SSID
- 4.Enterprise routers may restrict WiFi connectivity.

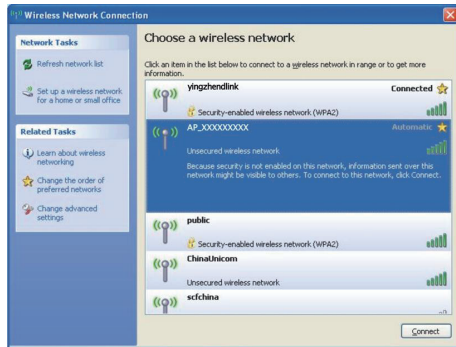
4. Set WiFi connection on PC

Notice: The setting hereinafter is operated with Windows XP for reference only. If other operating systems are used, please follow the corresponding procedures.

1. Prepare a computer or device with WiFi, e.g. tablet PC and smartphone with WiFi function.
2. Obtain an IP address automatically.
3. Set WiFi connection to the logger
- 3.1 Open wireless network connection and click View Wireless Networks



- 3.2 Select wireless network of the logger. The network name consists of AP and the serial number of the product. Input the password shown on the logger. Then click Connect.

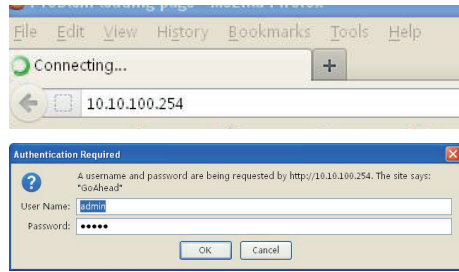


Notice: If AP_ (serial number of product) is not available in the wireless network list, there may be problems in the connection or setting of logger. Please wait several minutes to refresh the list or plug in the logger again.

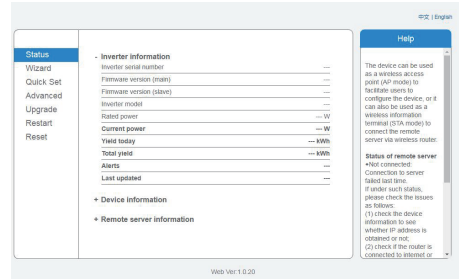
4. Set parameters of logger

- 4.1 Open a web browser, and enter 10.10.100.254, then fill in username and password, both of which are admin as default.

Recommended browsers: Internet Explorer 8+, Google Chrome 15+, Firefox 10+

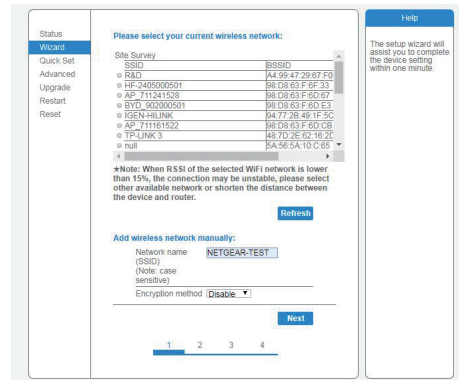


- 4.2 In the Status page, you can view general information of the logger.



- 4.3 Follow the setup wizard to start quick setting.

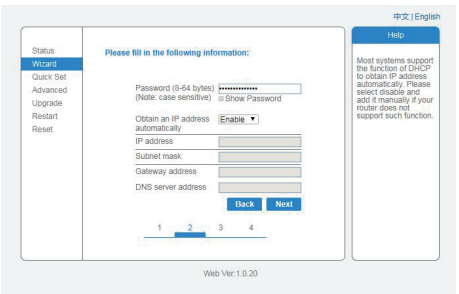
(a) Click Wizard to start. Select the wireless network you need to connect, then click Next



Notice: If the signal strength (RSSI) of the selected network is <15%, which means unstable connection, please adjust the antenna of the router, or use a repeater to enhance the signal.

The SSID of your selected router network should be less than 30 characters, in which blank space should not be included.

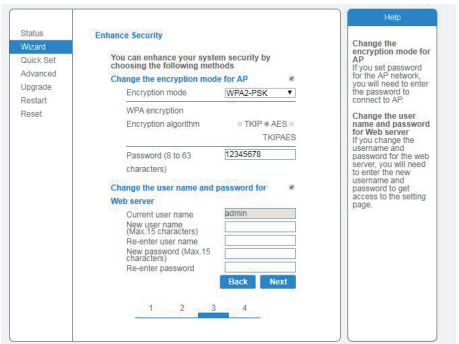
- (b) Enter the password for the selected network, select Enable to obtain an IP address automatically, then click Next.



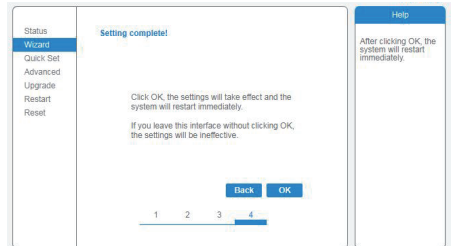
Notice: Router password cannot be recognized if it contains any character such as '&', '#', '%', and blank space.

The password is being verified, please wait for a while. If you have entered an invalid password or encryption method, an error notice will pop up.

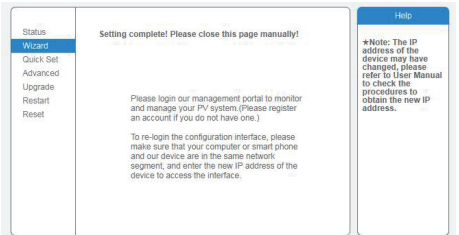
- (c) Enhance security settings of the WiFi logger by selecting any options as listed, then click Next.



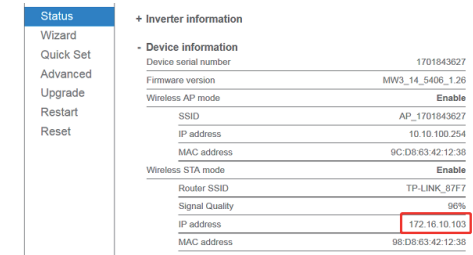
- (d) If setting is successful, the following page will display. Click OK to restart.



- (e) If restart is successful, the following page will display. If this page does not display automatically, please refresh your browser.



- (j) Re-log in this setting page to Status page after the Web server restart, and check the network connection status of the logger.



Notice: After network setting is complete, the Wireless AP mode should be enabled and relative information of your router will display on the interface automatically. Besides the Remote server A should be connected.

If you meet any problems and need support, please provide the screenshot of the status page as shown below.

